



OBLT series

SOLID HANDLING END SUCTION PUMP

OBLT RANGE

PRODUCT FEATURES

- Non-clog impeller design. (Standard semi-open design; optional closed and fully opened design)
- Heavy duty construction; thick cross section of wetted parts for durability.
- Design in simplicity to ease operation & maintenance.
- Pump construction is design for easy dismantle and assemble.

Are able to handle abrasive and corrosive pulp and dirt; with, large size solids and with heavy slurries. It is designed to belt driven or direct coupled. Various duties can be met by-varying pulley sizes. One size of the pump can handle many different requirements with the change of speed, providing interchangeability and minimizing inventory requirements.



OPTIMUM DESIGN:

IMPELLER with wide flow passage allows large solids to pass, yet maintaining a high efficiency. Its' hydraulic design prevents slurry recirculation keeping abrasive wear to a minimum.

IMPELLER is provided with back vanes to prevent solids clogging at mechanical seal section and to minimise solids getting into the seal housing to provide increased seal life.

SHAFT is of very large diameter and is designed with minimum over-hang, low shaft deflection (L^3/D^4) ratio, thus decreasing shaft deflection, sturdier rotation and increasing seal and bearing life.

EASY MAINTENANCE

The cost is low. Routine maintenance is made easy because components are easy to reach. The basic life of OBLT pumps are long, keeping down time and maintenance to a minimum. The assemble bolts of the liquid end are few in number, located in notched holes and are easily accessible. The material used is good quality high tensile steel.

BACK PULL OUT DESIGN

Allows all wearing parts exposed for inspection by simply opening the bolts holding the casing on to the bearing cartridge. The rotating elements are slid backwards providing direct access to the impeller, seal housing, mechanical seal and shaft sleeve (Gland packed sealing option), with the casing still mounted onto the pipelines, without having disturb the pipeline. Changing of parts take a minimum time.

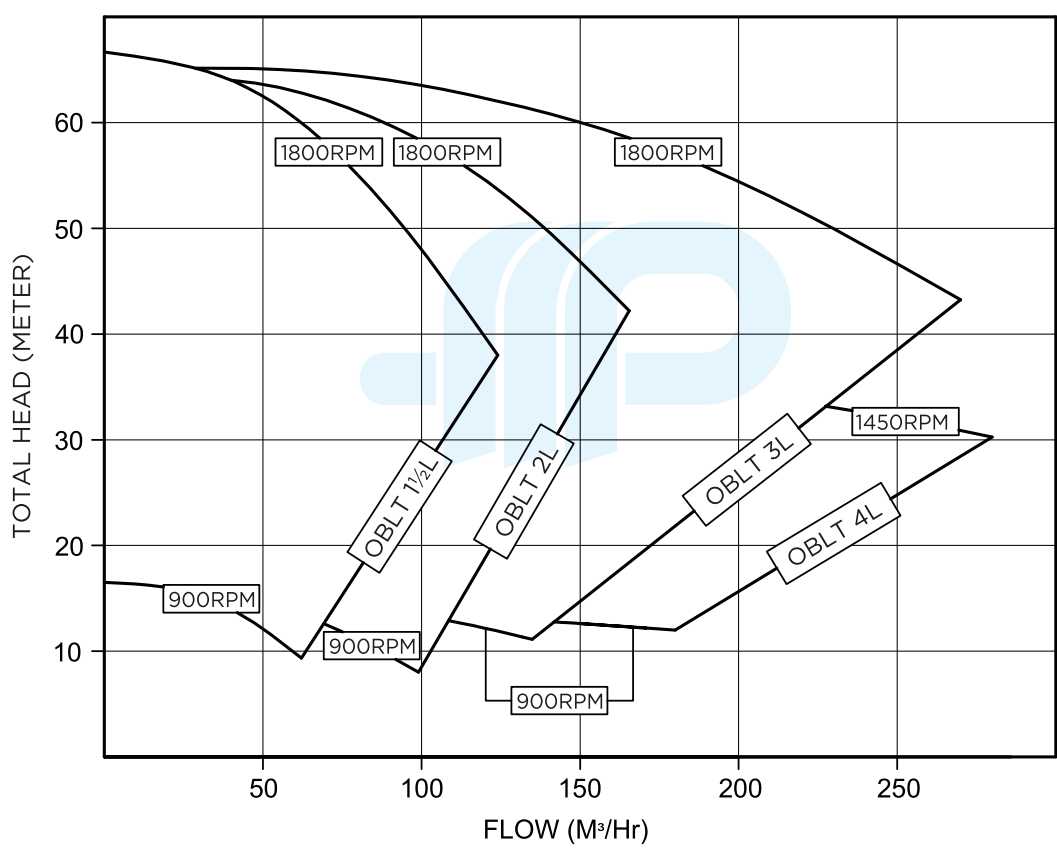
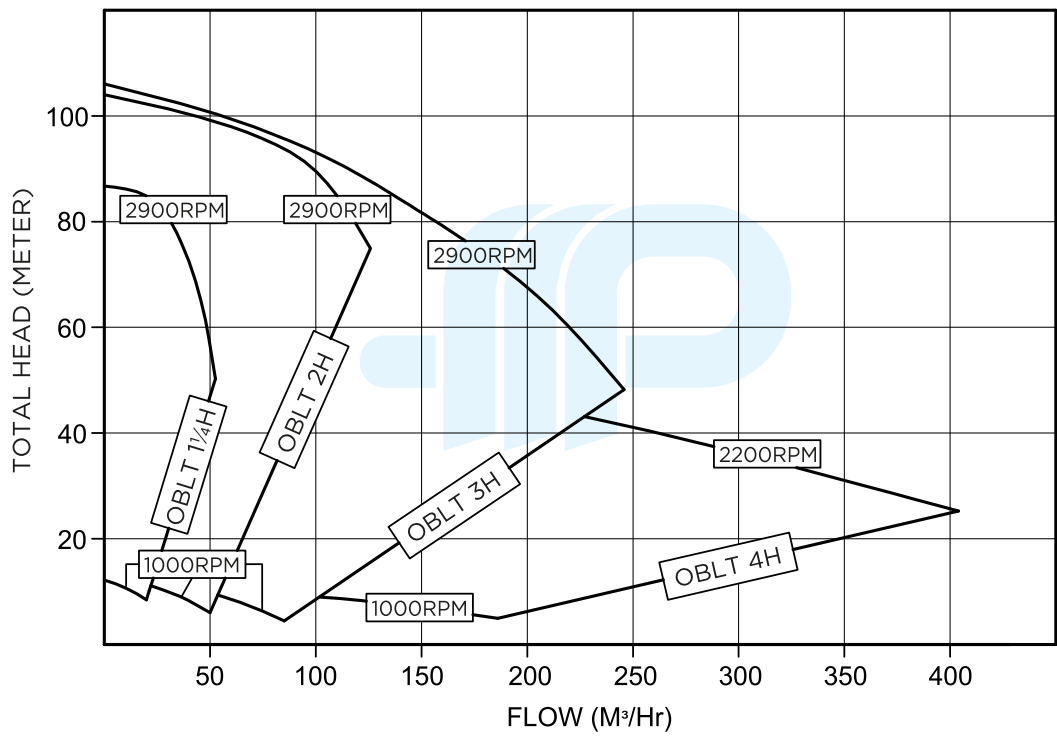
STANDARD FEATURES

Water Box Mechanical Seal	- Carbon Ceramic, SiC vs. SiC, VITON Elastomer
Bearing	- 2 deep groove ball bearings SKF or equivalent. Sealed for life lubrication
Pulley belt driven or direct couple	
Working Temperature	- 80 deg°C Max 120 deg°C

PUMP END MATERIAL CONFIGURATION

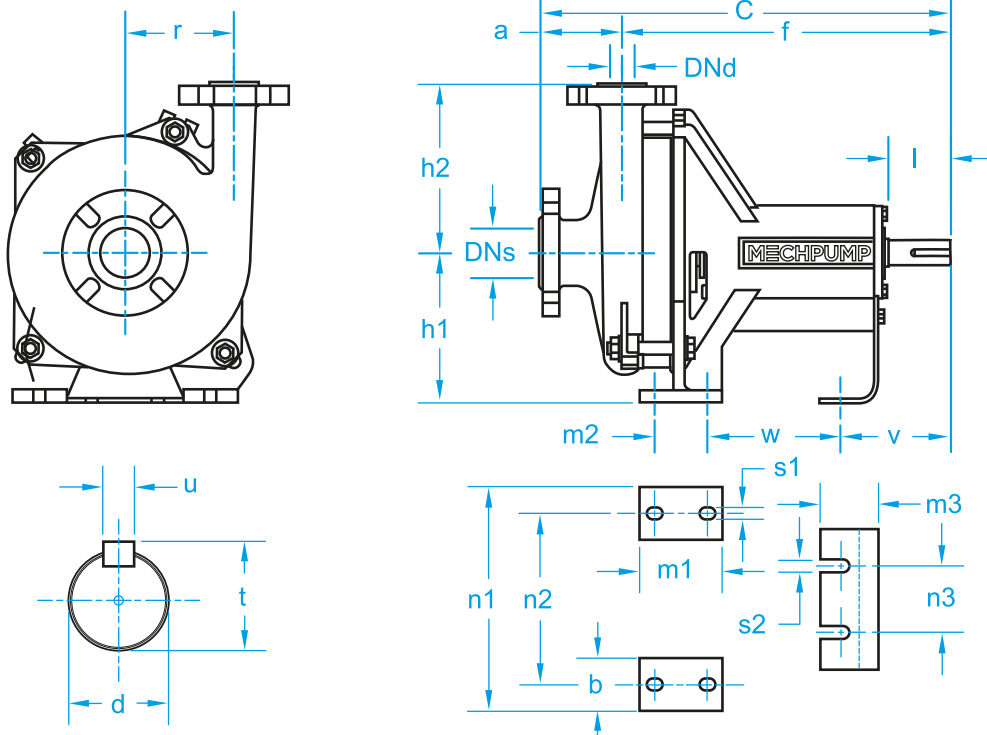
Stainless Steel CMA
Stainless Steel Grade 304/316

SELECTION CHART

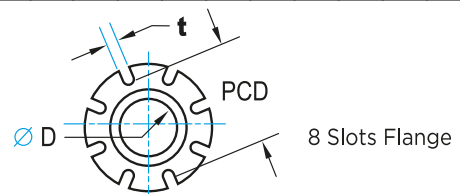
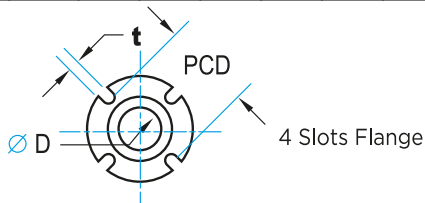


GENERAL DIMENSION

MODEL: OBLT



Pump Model		Dimensions in mm																																				
		Flange		Pump Dimension						Foot Mount Dimension										Shaft End																		
		DNs	DNd	a	f	c	h1	h2	r	b	m1	m2	m3	n1	n2	n3	s1	s2	v	w	d	l	t	u														
H Series	OBLT 1¼H	50	32	111	399	510	192	220	140	68	106	68	65	288	220	85	15	15	168	151	32	80	35	12														
	OBLT 2H	80	50	123	409	532																			154													
	OBLT 3H	100	80	115	444	559	210	242	130												378	310	310	310	310	310	310	310	310	310	42	110	45	12				
	OBLT 4H	125	100	125	458	583																													262	148		
L Series	OBLT 1½H	65	40	90	428	518	230	254	165	68	106	68	65	288	220	85	15	15	168	151															42	110	45	12
	OBLT 2L	80	50	120	437	557																																
	OBLT 3L	100	80	115	460	575	230	260	161												378	310	310	310	310	310	310	310	310	310	42	110	45	12				
	OBLT 4L	150	100	155	472	627																													280	167		



Suction Flange	Bore, ØD	Slot, t	PCD
OBLT 1¼H	50	20	100
OBLT 1½L	65	20	145
OBLT 2H	80	20	160

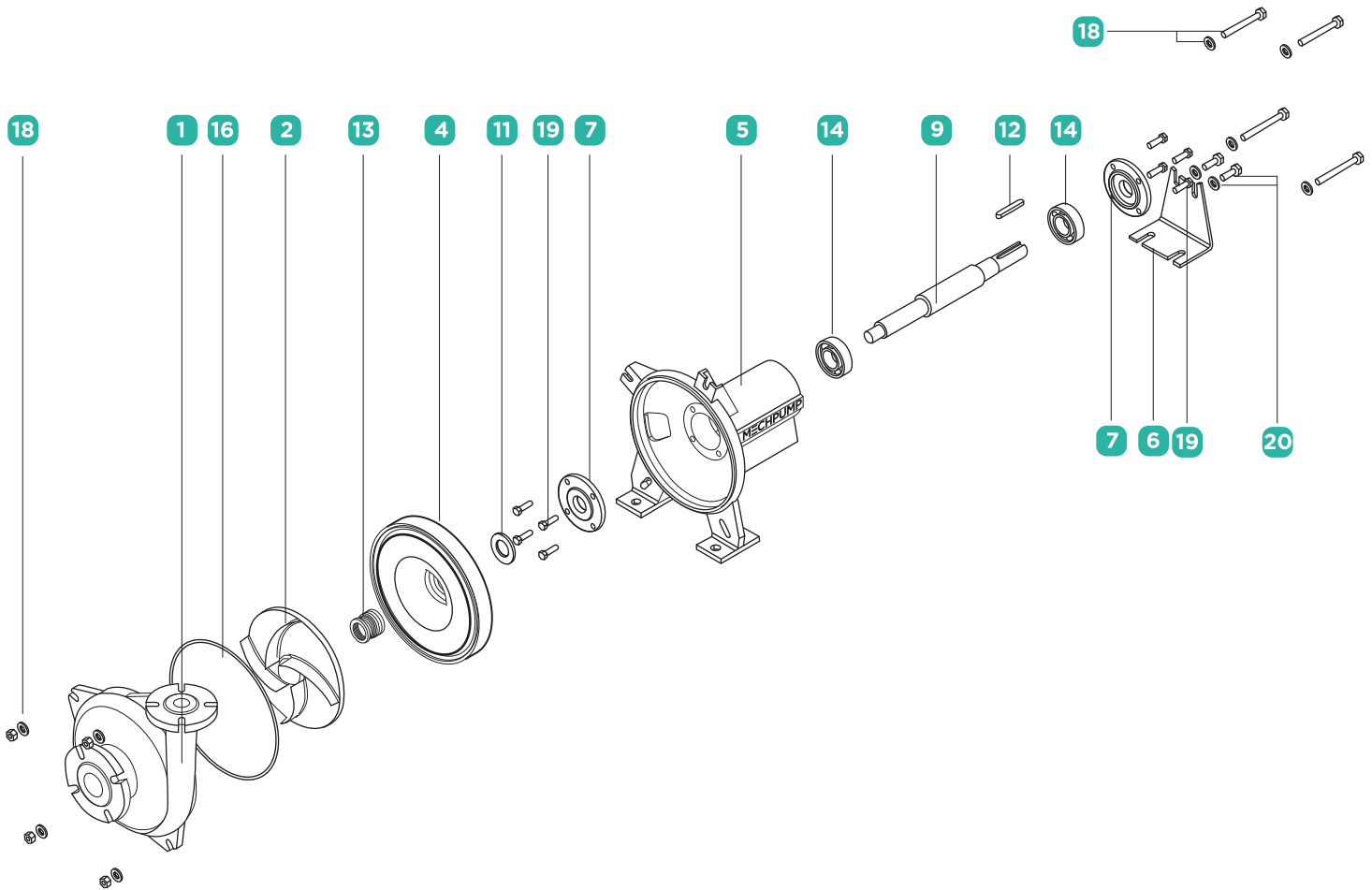
Suction Flange	Bore, ØD	Slot, t	PCD
OBLT 2L	80	20	160
OBLT 3H	100	20	180
OBLT 4H	125	20	210
OBLT 3L	100	20	180
OBLT 4L	125	20	210

Delivery Flange	Bore, ØD	Slot, t	PCD
OBLT 1¼H	32	20	100
OBLT 2H	50	20	125
OBLT 1½L	40	20	110
OBLT 2L	50	20	125

Delivery Flange	Bore, ØD	Slot, t	PCD
OBLT 3H	80	20	160
OBLT 4H	100	20	180
OBLT 3L	80	20	160
OBLT 4L	100	20	180

Note :
 "Product Specification subject to change without prior notice"
 "Flange dimension according to ISO2084-PN16 (BS4504-1969 Table 16/11, DIN2501/PN16)"

PART LIST



ITEM NO.	PART NAME	QTY.
1	CASING	1
2	IMPELLER	1
4	SEAL HOUSING	1
5	BEARING HOUSING	1
6	MOUNTING FOOT	1
7	BEARING COVER	1
9	SHAFT	1
11	WATER THROWER	1
12	KEY	1
13	MECHANICAL SEAL	1
14	BEARING	2
16	GASKET	1
18	BOLT, NUT AND WASHER SET (CASING)	4
19	BOLT (BEARING COVER)	8
20	BOLT AND WASHER SET (MOUNT THE FOOT)	2



www.mechpump.com

